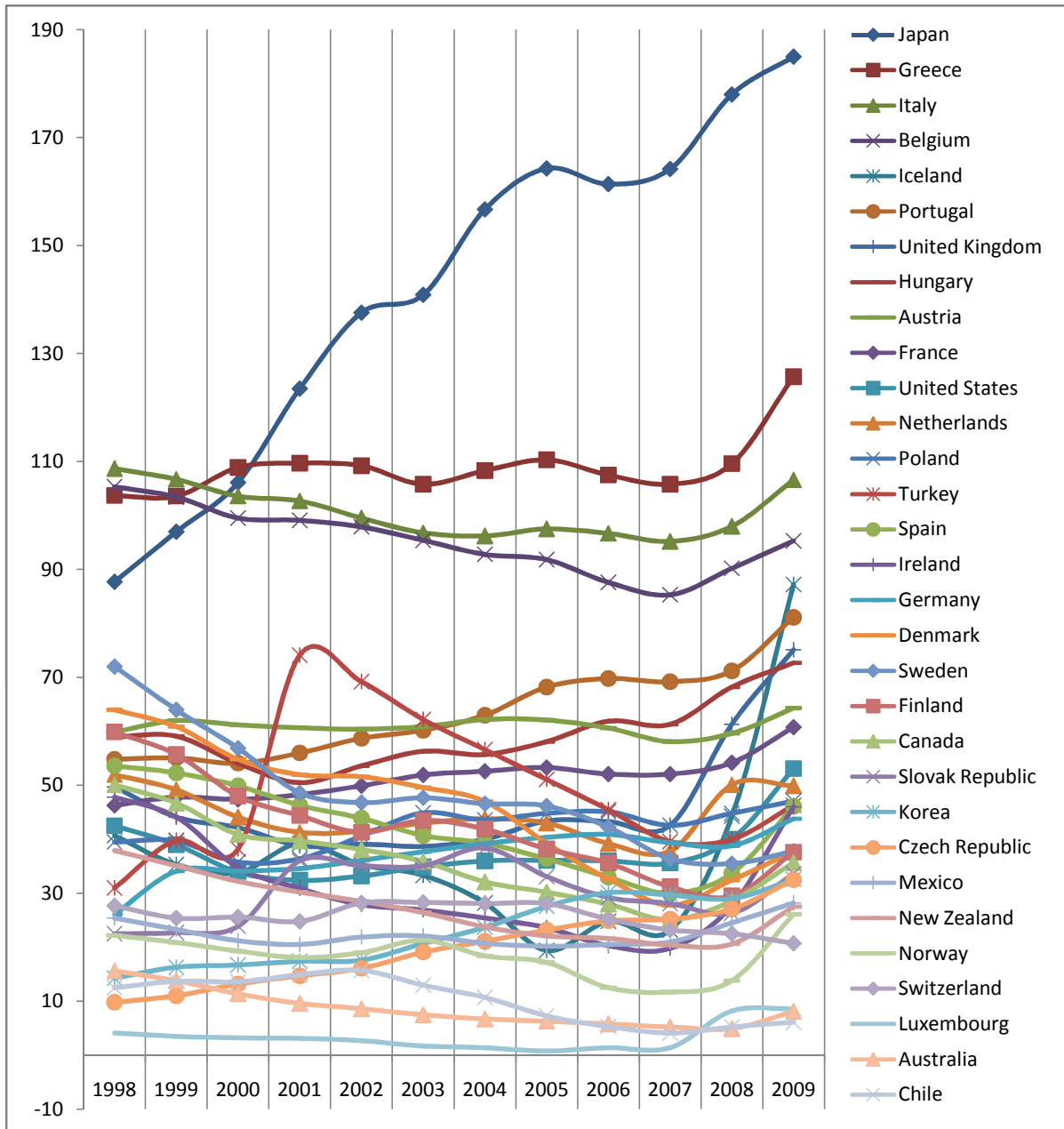


OECD Government Central Debt as a percentage of Gross Domestic Product (GDP)



Points of note about this graph:

- Australia, Luxembourg and Chile are the only countries with less than 20% government debt
- Australia's debt **never** reached zero under the Howard government (a common myth)
- Japan's government debt is almost 23 times that of Australia
- The mean government debt of OECD countries is 53.5%
- Australia's government debt is just 15% of average

Other notes of interest:

- Australia's government debt is expected to peak at under 10% of GDP
- Australia's increase in debt during the GFC is lower than any country in the OECD.

OECD Government Central Debt (GCB)

as a percentage of Gross Domestic Product (GDP)

Country	1998	1999	2000	2001	2002	2003	2004	2005	2006	2007	2008	2009
Japan	87.7	97	106.1	123.5	137.6	140.9	156.7	164.3	161.4	164.2	178	185
Greece	103.7	103.6	108.9	109.7	109.2	105.8	108.3	110.3	107.5	105.8	109.6	125.7
Italy	108.7	106.7	103.6	102.7	99.5	96.8	96.2	97.5	96.7	95.2	98	106.6
Belgium	105.3	103.4	99.5	99.1	97.9	95.4	92.8	91.8	87.6	85.3	90.2	95.3
Iceland	40.7	35.3	33.8	39.2	35.3	33.3	28.2	19.4	24.8	23.2	44.3	87.2
Portugal	54.8	55.1	54.1	56	58.7	60.2	63	68.2	69.8	69.2	71.2	81.1
United Kingdom	49.7	44.1	42.2	38.8	39.1	38.7	40	43.4	43.3	42.6	61.3	75.1
Hungary	59	59.1	54.1	50.5	53.6	56.3	55.7	58.1	61.9	61.3	68.2	72.7
Austria	59.9	62	61.2	60.7	60.4	60.9	62.2	62.1	60.6	58.1	59.6	64.3
France	46.3	47.8	47.4	48.3	49.9	51.9	52.6	53.3	52.1	52.1	54.2	60.8
United States	42.5	39	33.9	32.4	33.2	34.9	36	36.1	36	35.6	40	53.1
Netherlands	52	49.2	44.1	41.3	41.5	43	43.8	43	39.2	37.8	50.1	49.9
Poland	39.5	39.7	35.8	36.4	40.6	44.9	43.6	44.8	45.1	42.6	44.8	47.1
Turkey	31	39.8	38.2	74.1	69.2	62.2	56.6	51.1	45.5	39.6	40	46.3
Spain	53.6	52.3	49.9	46.3	43.9	40.7	39.3	36.4	33	30	33.7	46.1
Ireland	47.8	44.1	34.8	30.9	27.9	26.9	25.4	23.6	20.3	19.8	27.7	46
Germany	26.1	34.1	34.1	34.6	36.1	37.7	39.2	40.4	40.9	39.4	38.8	43.8
Denmark	64	60.9	54.8	52	51.6	49.6	47	39.3	32.7	27.8	32.4	37.8
Sweden	72	64	56.9	48.6	46.8	47.7	46.6	46.2	42.3	36.4	35.5	37.8
Finland	59.9	55.7	48	44.4	41.3	43.5	41.9	38.2	35.6	31.2	29.5	37.6
Canada	50.1	46.7	40.9	39.7	38.1	35.9	32.1	30.2	28	25.1	28.6	35.7
Slovak Republic	22.5	22.7	23.9	36	35.1	35.1	38.4	33.1	29.2	28.1	26.3	33.6
Korea	14.3	16.3	16.7	17.4	17.6	20.7	23.7	27.6	30.1	29.7	29	32.6
Czech Republic	9.8	11	13.2	14.7	16.1	19.1	21.1	23.2	24.9	25.2	27.1	32.5
Mexico	25.4	23.3	21.2	20.5	21.9	22.1	20.7	20.2	20.5	21	24.5	28.2
New Zealand	37.9	35.1	32.2	30.2	28.5	26.4	23.8	22.1	21.6	20.4	20.6	27.5
Norway	22.2	20.9	19.3	18.1	19	21.3	18.4	17.2	12.5	11.7	13.8	26.1
Switzerland	27.7	25.4	25.6	24.8	28.2	28.3	28.1	28.1	25.2	23.2	22.5	20.7
Luxembourg	4.1	3.5	3.2	3.1	2.7	1.7	1.4	0.8	1.4	1.4	8.2	8.6
Australia	15.6	13.8	11.4	9.6	8.6	7.5	6.7	6.3	5.8	5.2	4.9	8.1
Chile	12.5	13.7	13.6	14.9	15.7	13	10.7	7.3	5.3	4.1	5.2	6.1